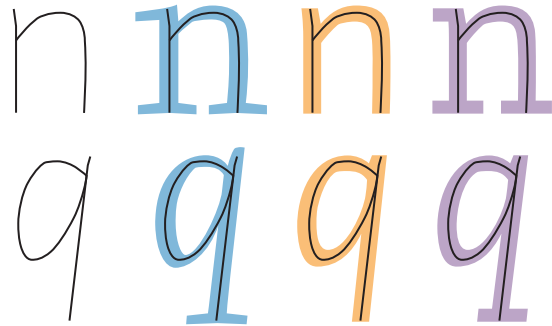


FF Nexus™

A FAMILY OF THREE 'CONNECTED' TYPEFACES
designed by Martin Majoor



Between 1988 and 1994 Martin Majoor designed *Scala* and *Scala Sans*. The idea behind *Scala* was to design a serif, humanistic typeface from which a sans serif version would be derived. Majoor called it: *Two typefaces, one form principle*, and it would become the basis of his type design philosophy.

FF Nexus Serif

FF *Scala* is a large family, and in the more than ten years of its existence especially the combination of a serif version and a sans serif version has proven to be highly succesful in corporate design, in book design and in newspaper design. Now, ten years later, Majoor has changed his idea of *Two typefaces, one form principle* into *Three typefaces, one form principle*, with a new family of typefaces as a result.

FF Nexus Sans

FF Nexus is an extensive family of three 'connected' typefaces, partly based on Majoor's FF *Seria*, but much more a work-horse face. Starting point is the typeface **FF Nexus Serif**. Then there is a sans serif version that is derived from the serif: **FF Nexus Sans**. And then there comes in a third member, a slab-serif-like design **FF Nexus Mix** that in its turn is derived from the sans.

FF Nexus Mix

FF Nexus Typewriter is a useful corporate monospaced font. It includes old style figures, *real italics* and a **bold italic**.

FF Nexus Serif Italic is provided with two series of elegant *Swash Capitals*. Lowercase swashes are available as *Long* and as *short* end swashes.

FF Nexus Serif » **FF Nexus Sans** » **FF Nexus Mix**

FF Nexus Serif » **FF Nexus Sans** » **FF Nexus Mix**

.....
A B C D E F G H I J K L M N O P Q R S T U V W X Y Z
a b c d e f g h i j k l m n o p q r s t u v w x y z
A B C D E F G H I J K L M N O P Q R S T U V W X Y Z
1 2 3 4 5 6 7 8 9 0 1 2 3 4 5 6 7 8 9 0 1 2 3 4 5 6 7 8 9 0
&?!*ſfiß@© &?!*ſfiß@© &?!*ſfiß@©

A B C D E F G H I J K L M N O P Q R S T U V W X Y Z
a b c d e f g h i j k l m n o p q r s t u v w x y z
A B C D E F G H I J K L M N O P Q R S T U V W X Y Z
1 2 3 4 5 6 7 8 9 0 1 2 3 4 5 6 7 8 9 0 1 2 3 4 5 6 7 8 9 0
&?!*ſfiß@© &?!*ſfiß@© &?!*ſfiß@©

A B C D E F G H I J K L M N O P Q R S T U V W X Y Z
a b c d e f g h i j k l m n o p q r s t u v w x y z
A B C D E F G H I J K L M N O P Q R S T U V W X Y Z
1 2 3 4 5 6 7 8 9 0 1 2 3 4 5 6 7 8 9 0 1 2 3 4 5 6 7 8 9 0
&?!*ſfiß@© &?!*ſfiß@© &?!*ſfiß@©

A B C D E F G H I J K L M N O P Q R S T U V W X Y Z
a b c d e f g h i j k l m n o p q r s t u v w x y z
A B C D E F G H I J K L M N O P Q R S T U V W X Y Z
1 2 3 4 5 6 7 8 9 0 1 2 3 4 5 6 7 8 9 0 1 2 3 4 5 6 7 8 9 0
&?!*ſfiß@© &?!*ſfiß@© &?!*ſfiß@©

A B C D E F G H
A B C D E F G H
a b c d e f g
a b c d e f g h i j k l

FF Nexus Typewriter

.....
A B C D E F G H I J K L M N O P Q R S T U V W X Y Z
a b c d e f g h i j k l m n o p q r s t u v w x y z
&1 2 3 4 5 6 7 8 9 0 &1 2 3 4 5 6 7 8 9 0

A B C D E F G H I J K L M N O P Q R S T U V W X Y Z
a b c d e f g h i j k l m n o p q r s t u v w x y z
&1 2 3 4 5 6 7 8 9 0 &1 2 3 4 5 6 7 8 9 0

.....
The **FF Nexus™** family has been released in the autumn of 2004 by *FS1 FontShop International* in both the OpenType format and in the traditional formats. All weights are provided with small caps, table figures and extensive expert sets.

© 2004, MARTIN MAJoor